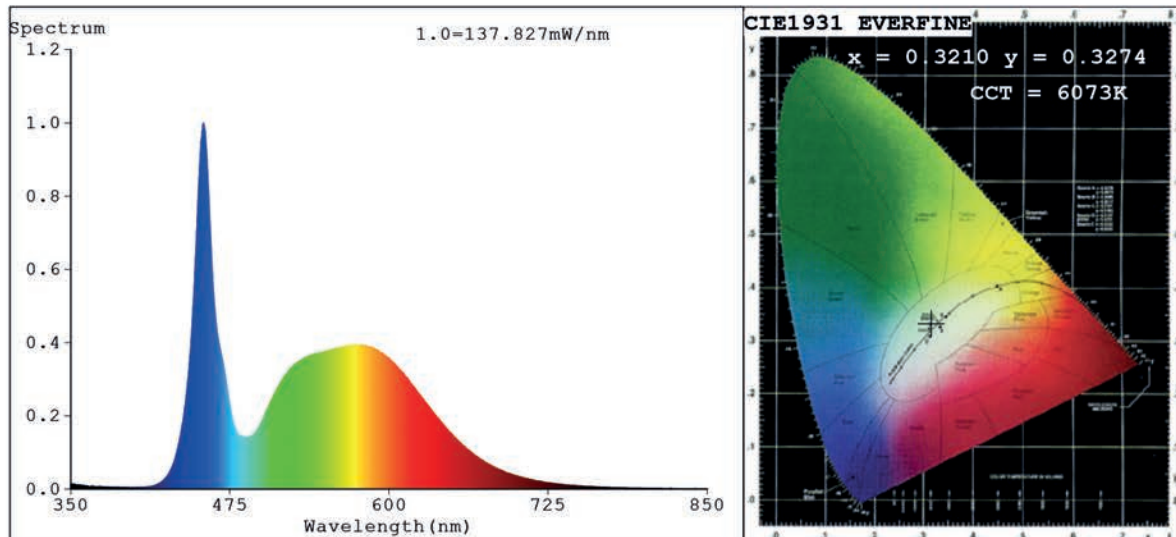


## Spectrum Test Report



### Color Parameters:

Chromaticity Coordinate:  $x=0.3210$   $y=0.3274$   $u'=0.2042$   $v'=0.4687$   
 CCT=6073K (Duv=-0.0018) Dominant WL:Ld =485.3nm Purity=4.6%  
 Ratio:R=14.1% G=80.9% B=5.1%;; Peak WL:Lp=454.3nm FWHM=17.0nm  
 Render Index:Ra=81.2 CRI=73.2 TM30:Rf=77 Rg=94  
 R1 =80 R2 =88 R3 =89 R4 =80 R5 =80 R6 =80 R7 =86  
 R8 =67 R9 =4 R10=67 R11=77 R12=50 R13=83 R14=94 R15=78

### Photo Parameters:

Flux = 3389 lm Eff. : 158.15 lm/W Fe = 10.84 W

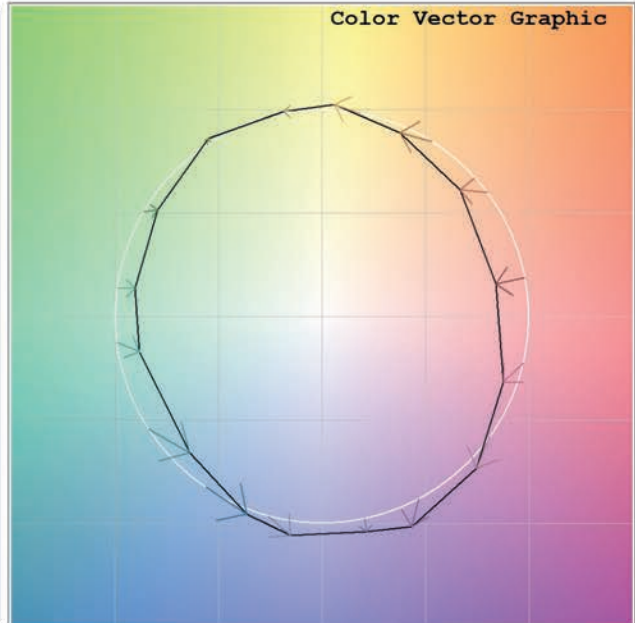
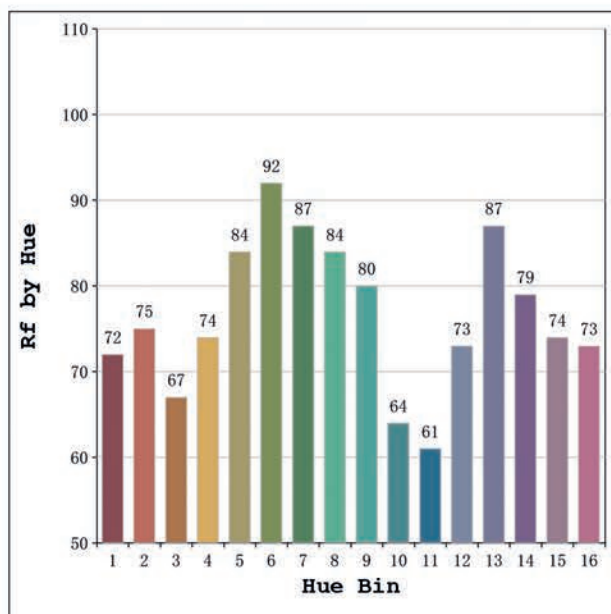
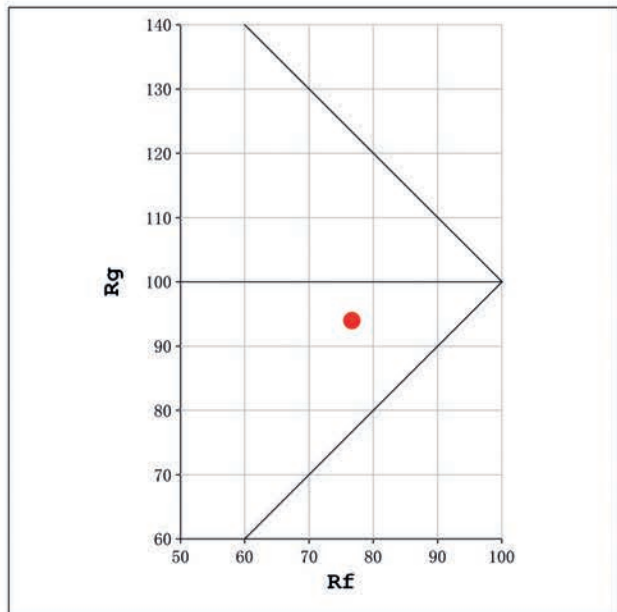
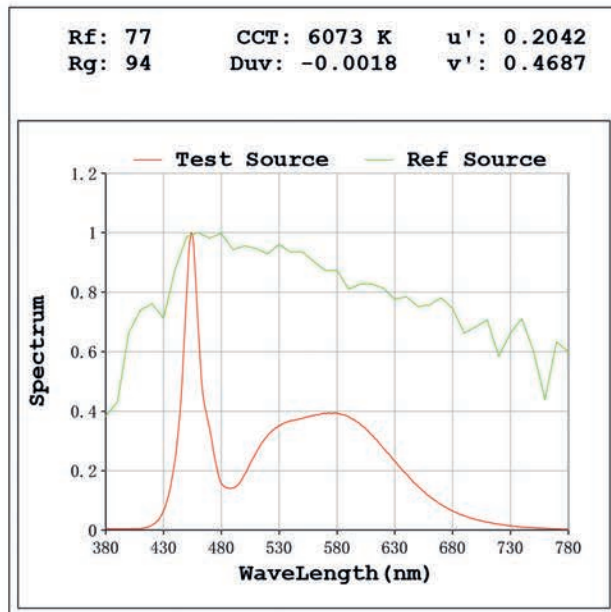
### Electrical parameters:

V = 23.998 V I = 0.8929 A P = 21.43 W PF = 1.000

Status: Integral T = 276 ms Ip = 51187 (78%)

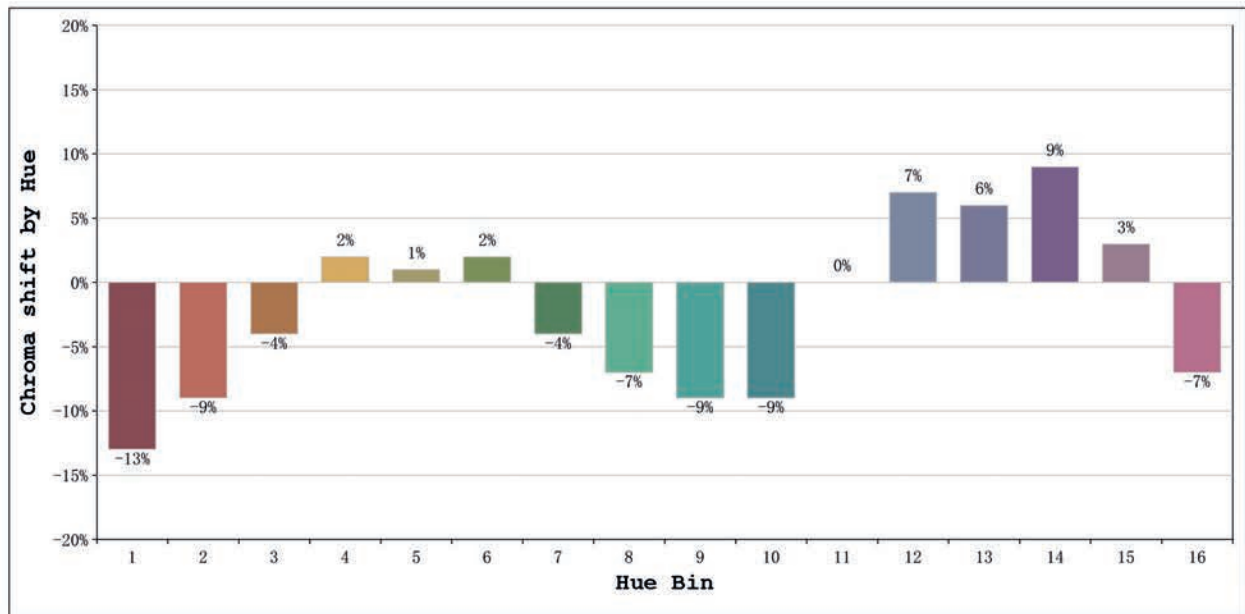
Model:Ecoled Altea 6000K  
 Tester:Sergio Carneros  
 Temperature:25Deg  
 Manufacturer:Luz Negra

Number: 31.223  
 Date:2025-07-24 14:02:43  
 Humidity:50%  
 Remarks:100cm de tira flexible



Model:Ecoled Altea 6000K  
 Tester:Sergio Carneros  
 Temperature:25Deg  
 Manufacturer:Luz Negra

Number: 31.223  
 Date:2025-07-24 14:02:43  
 Humidity:50%  
 Remarks:100cm de tira flexible



			Graphic shift(%)	
Hue Bin	Hue Angle	Rf	Chroma	Hue
1	0.0° - 22.5°	72	-13	0
2	22.5° - 45.0°	75	-9	8
3	45.0° - 67.5°	67	-4	15
4	67.5° - 90.0°	74	2	13
5	90.0° - 112.5°	84	1	6
6	112.5° - 135.0°	92	2	-1
7	135.0° - 157.5°	87	-4	-4
8	157.5° - 180.0°	84	-7	0
9	180.0° - 202.5°	80	-9	7
10	202.5° - 225.0°	64	-9	20
11	225.0° - 247.5°	61	0	24
12	247.5° - 270.0°	73	7	13
13	270.0° - 292.5°	87	6	0
14	292.5° - 315.0°	79	9	-9
15	315.0° - 337.5°	74	3	-15
16	337.5° - 360.0°	73	-7	-10

Model:Ecoled Altea 6000K  
 Tester:Sergio Carneros  
 Temperature:25Deg  
 Manufacturer:Luz Negra

Number: 31.223  
 Date:2025-07-24 14:02:43  
 Humidity:50%  
 Remarks:100cm de tira flexible